

All Aboard for TrainMinder.™

Introducing the world's best collection management software.

Reef Development, pioneers of point and click toy train inventories introduces TrainMinder, the most advanced and easy to use collection software in the world.

Now you can manage your entire train collection faster and easier and do more with it than you ever dreamed possible. TrainMinder allows you to click and drag information from a variety of sources and simply drop it into TrainMinder's new dynamic windows.

It's now easier than ever before to build your master collection list. And TrainMinder will monitor the market place and deliver special price and program updates to our users. Our PriceMinder™ guarantees you'll have the most up-to-date pricing in the world. Let TrainMinder take you to a whole new level.

Nothing Like TrainMinder Has Ever Existed

Not only is TrainMinder easy to use, it can do more than all other collection management software combined. Just look at the features built into TrainMinder.

Real-Time Pricing

Only TrainMinder updates your price list automatically with our revolutionary real time pricing. PriceMinder guarantees that your collection pricing will always be updated to reflect current market prices. No matter how small or large your collection, it will always be priced accurately. And best of all, you'll never need to fool with another "update disk" again.

Stout Auctions Images

Stout Auctions is the leading US auction house dealing with Lionel, American Flyer, Marx, Ives, as well as other scale and toy trains. Through a special licensing arrangement, TrainMinder gives you direct access to the most complete auction house for toy

trains noted for getting the highest sale prices. Stout has the largest and most detailed visual image library available with all major and minor variations of every toy train ever made. TrainMinder can automatically import the entire Stout Image Library and turn it into one of your most valuable research tools.

Greenberg's Guides

TrainMinder links you directly to the Greenberg's Guides which are packed with pricing and market details including a description of every toy train item ever produced. Greenberg's is world's most trusted and authoritative source for the serious collector.

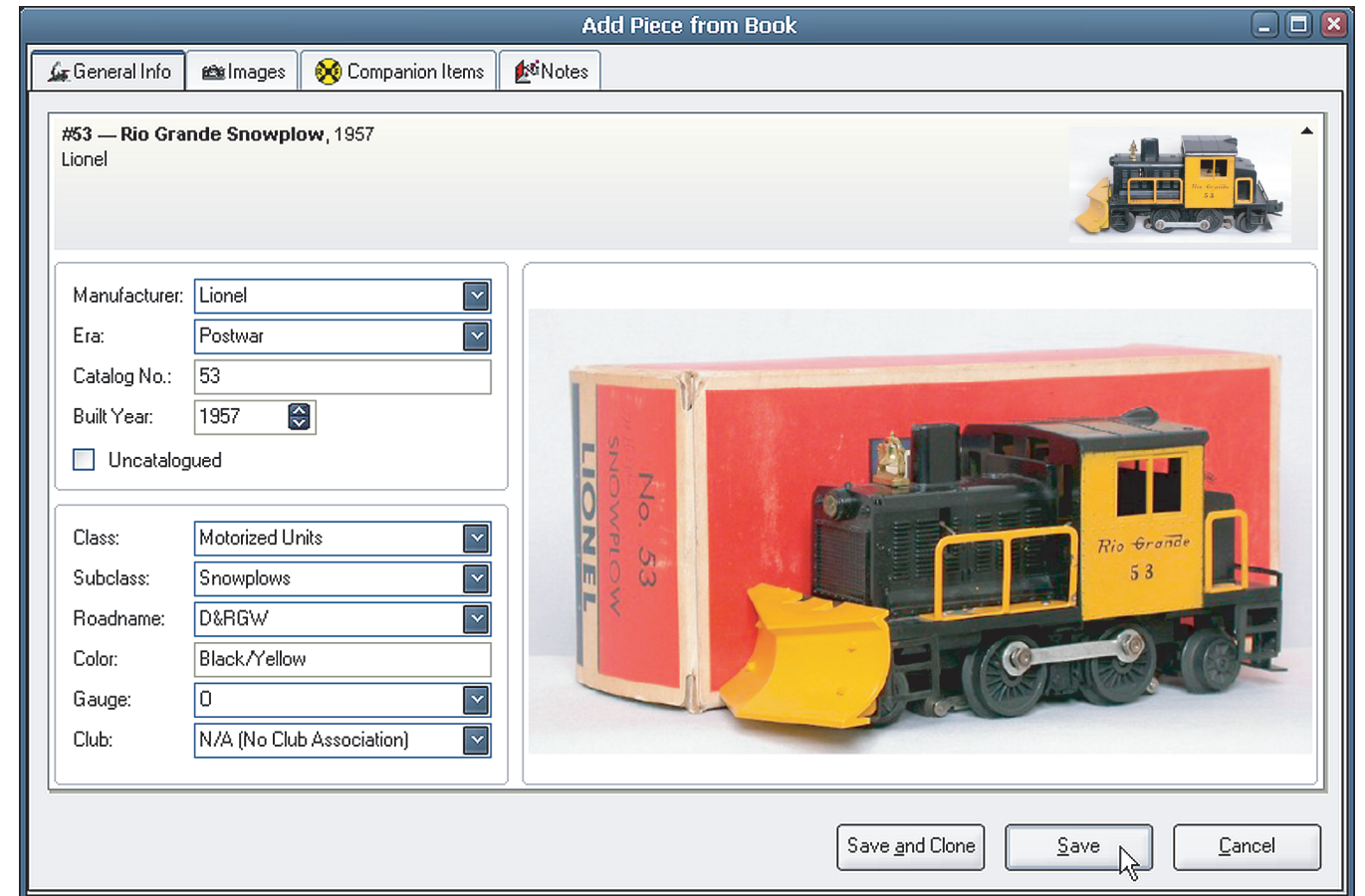
RR-Track Layout Design Software

TrainMinder is the only collection software compatible with RR-Track layout design software. Shopping and inventory lists can be imported directly into TrainMinder from RR-Track. TrainMinder is the perfect companion software for turning RR-Track information into the most dynamic and versatile collector's tool imaginable.

ViewMinder,™ PriceMinder, Import/Export, and More

TrainMinder makes generating lists and reports a breeze. Our ViewMinder library of 18 valuable templates can be customized to fit your specific needs.

You never have to update your price list or reports because PriceMinder automatically updates your collection using the latest market prices. And you can directly export any of your reports, lists or information to a variety of formats including Excel, Access, HTML, and other popular programs. TrainMinder also makes it easy to add digital photos from your camera. Add multiple images so you can see your item from all sides! And you can backup your complete inventory to CD for permanent archival or insurance valuation.



LikeMinder™

Our LikeMinder feature allows you to get together with other collectors over the Internet to compare notes concerning toy train prices, rarity, availability and more. Collectors can use LikeMinder to tell each other what market prices are, regardless of whether the trains were purchased on eBay, York, from a dealer or from a garage sale! LikeMinder allows you to share notes either publicly or privately.

TrainMinder is the perfect software solution for managing all your buying, selling and collecting needs. We've been keeping collectors on track for almost two decades.

To order go online to www.TrainMinder.com and see why everyone's saying "All Aboard" to the world's best collection management software.

